

WHAT WOULD YOU DO WITH \$9000?

Imagine the possibilities and get ready to enjoy this amazing cash prize by committing to participate in the

Global Growth Bonus Restart Program!

Participating is easy! All you have to do is pay attention and reach the milestones of each one of our 3 cycles (qualification periods). Keep your eyes on the prize and enter!

Cycle 1

From September 16, 2024 to October 20, 2024
Left Leg QV: 5000
Right Leg QV: 5000

**GET A
\$2500 BONUS**

Cycle 2

From October 21, 2024 to November 24, 2024
Left Leg QV: 7500
Right Leg QV: 7500
PGV: 3000

**GET A
\$3000 BONUS**

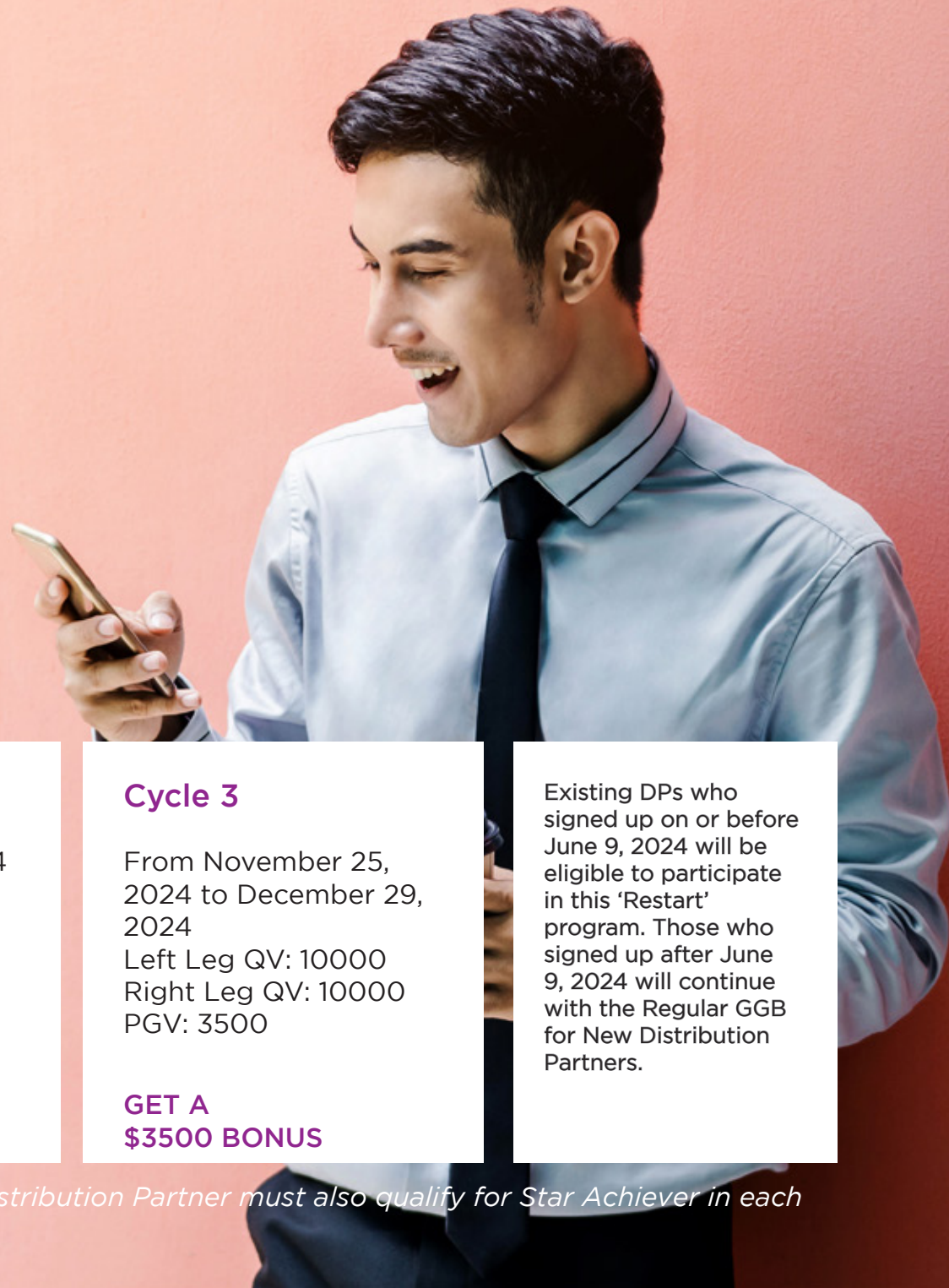
Cycle 3

From November 25, 2024 to December 29, 2024
Left Leg QV: 10000
Right Leg QV: 10000
PGV: 3500

**GET A
\$3500 BONUS**

Existing DPs who signed up on or before June 9, 2024 will be eligible to participate in this 'Restart' program. Those who signed up after June 9, 2024 will continue with the Regular GGB for New Distribution Partners.

To be entitled to the Global Growth Restart Bonus, Distribution Partner must also qualify for Star Achiever in each cycle of the GG Restart Program.



A man with glasses and a beard, wearing a light-colored suit jacket over a blue checkered shirt and a blue tie, is sitting at a table in a cafe. He is smiling and looking at a laptop screen. His hands are on the keyboard. On the table in front of him is a white coffee cup on a saucer. The background is softly blurred, showing warm, bokeh lights from a chandelier or similar fixture.

WANT TO ENTER?
PROSPECT, SAMPLE, AND ENROLL!

All you have to do is focus and implement actions to bring new members to your team.

LET'S DO THE MATH TO MAKE IT WORK

There are TWO ways with three scenarios to make it to the top on the QV and PGV goals:

QV

1. Sponsor new Distribution Partners who purchase a combination of PSPs

SCENARIO 1

Cycle 1

Left leg: Enroll NEW members with 4 Boundless Packs

Right leg: Enroll NEW members with 4 Boundless Packs

Cycle 2

Left leg: Enroll NEW members with 6 Boundless Packs

Right leg: Enroll NEW members with 6 Boundless Packs

**New members are those who sign up in cycle 1 and cycle 2*

Cycle 3

Left leg: Enroll NEW members with 8 Boundless Packs

Right leg: Enroll NEW members with 8 Boundless Packs

**New members are those who sign up in cycle 1, 2 and 3.*

* Packs can be combined to achieve the required QV per cycle on each leg. These examples assume a QV of 1300 for the Boundless Pack.

To be entitled to the Global Growth Restart Bonus, Distribution Partner must also qualify for Star Achiever in each cycle of the GG Restart Program.

LET'S DO THE MATH TO MAKE IT WORK

There are TWO ways with three scenarios to make it to the top on the QV and PGV goals:

QV

1. Sponsor new Distribution Partners who purchase a combination of PSPs

SCENARIO 2

Cycle 1

Left leg: Enroll NEW members with 10 Advantage Packs

Right leg: Enroll NEW members with 10 Advantage Packs

Cycle 2

Left leg: Enroll NEW members with 15 Advantage Packs

Right leg: Enroll NEW members with 15 Advantage Packs

**New members are those who sign up in cycle 1 and cycle 2*

Cycle 3

Left leg: Enroll NEW members with 20 Advantage Packs

Right leg: Enroll NEW members with 20 Advantage Packs

**New members are those who sign up in cycle 1, 2 and 3.*

*** Packs can be combined to achieve the required QV per cycle on each leg. These examples assume a QV of 500 for the Advantage Pack.**

To be entitled to the Global Growth Restart Bonus, Distribution Partner must also qualify for Star Achiever in each cycle of the GG Restart Program.

LET'S DO THE MATH TO MAKE IT WORK

There are TWO ways with three scenarios to make it to the top on the QV and PGV goals:

QV

2. Add the total purchases of personally enrolled Distribution Partners and their customers.

SCENARIO 3

Cycle 1

Left leg: Enroll NEW Distribution Partners who or whose customers buy products* with an equivalent of 5000 QV or more

Right leg: Enroll NEW Distribution Partners who or whose customers buy products* with an equivalent of 5000 QV or more

Cycle 2

Left leg: Enroll NEW Distribution Partners who or whose customers buy products* with an equivalent of 7500 QV or more

Right leg: Enroll NEW Distribution Partners who or whose customers buy products* with an equivalent of 7500 QV or more

**New members are those who sign up in cycle 1 and cycle 2*

Cycle 3

Left leg: Enroll NEW Distribution Partners who or whose customers buy products* with an equivalent of 10,000 QV or more

Right leg: Enroll NEW Distribution Partners who or whose customers buy products* with an equivalent of 10,000 QV or more

**New members are those who sign up in cycle 1, 2 and 3.*

* Product purchases include Nave and COGNITION

To be entitled to the Global Growth Restart Bonus, Distribution Partner must also qualify for Star Achiever in each cycle of the GG Restart Program.

LET'S DO THE MATH TO MAKE IT WORK

PGV

Cycle 2

3000 of the 15000 QV required must come from personally enrolled NEW members in this particular Cycle, with 3 Boundless Packs or PSP combinations

Cycle 3

3500 of the 20,000 QV required must come from personally enrolled NEW members in this Cycle, with 3 Boundless Packs or PSP combinations

To be entitled to the Global Growth Restart Bonus, Distribution Partner must also qualify for Star Achiever in each cycle of the GG Restart Program.

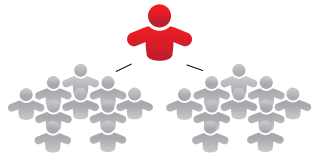
Let's Recap

Cycle 1: From September 16, 2024 to October 20, 2024



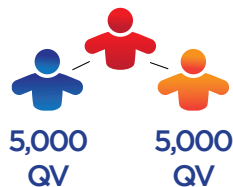
Scenario 1
QV: Enroll NEW members with 4 Boundless Packs in both legs

OR



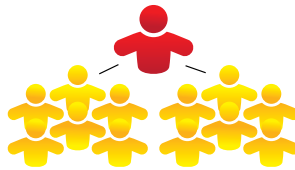
Scenario 2
QV: Enroll NEW members with 10 Advantage Packs in both legs

OR



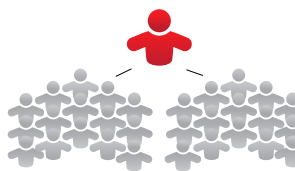
Scenario 3
QV: Enroll NEW Distribution Partners who or whose customers buy products with an equivalent of 5,000 QV on both legs

Cycle 2: From October 21, 2024 to November 24, 2024



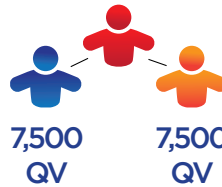
Scenario 1
QV: Enroll NEW members with 6 Boundless Packs in both legs

OR



Scenario 2
QV: Enroll NEW members with 15 Advantage Packs in both legs

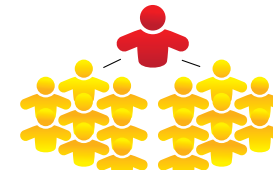
OR



Scenario 3
QV: Enroll NEW Distribution Partners who or whose customers buy products with an equivalent of 7,500 QV on both legs

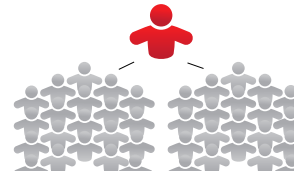
**3000 QV should come from personally sponsored NEW members in this Cycle alone with 3 Boundless Packs or PSP combinations*

Cycle 3: From November 25, 2024 to December 29, 2024



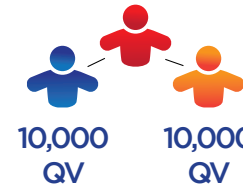
Scenario 1
QV: Enroll NEW members with 8 Boundless Packs in both legs

OR



Scenario 2
QV: Enroll NEW members with 20 Advantage Packs in both legs

OR



Scenario 3
QV: Enroll NEW Distribution Partners who or whose customers buy products with an equivalent of 10,000 QV on both legs

**3500 QV should come from personally sponsored NEW members in this Cycle alone with 3 Boundless Packs or PSP combinations*

GET A
\$2500 BONUS

GET A
\$3000 BONUS

GET A
\$3500 BONUS

Choose your most suitable scenario, leverage your prospects, and fulfill your business and financial goals with ORGANO!

The GG Restart Bonus is paid after 30 days of the cycle end date. The Company reserves the right to amend the GGB qualification criteria at any time at its sole discretion.